

Bluetooth Chip Antenna ANT001-2G450



Applications

The ANT001-2G450 is a small size, LTCC-technology based chip antenna specifically designed for 2450MHz Bluetooth and WLAN applications.

Specifications

| Part Number | Bandwidth | Peak Gain (V-XZ) | Average Gain (V-XZ) | VSWR (in BW) | Impedance |
|--------------|--------------|------------------|---------------------|--------------|-----------|
| ANT001-2G450 | 2400-2500MHz | 3.0dBi typ | 1.0dBi typ. | < 2 | 50 Ohm |

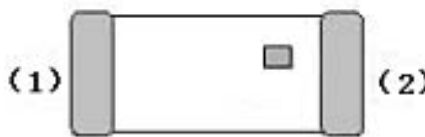
Operating Temperature Range : -40 ~ +85 °C

Storage Temperature Range : -40 ~ +85 °C

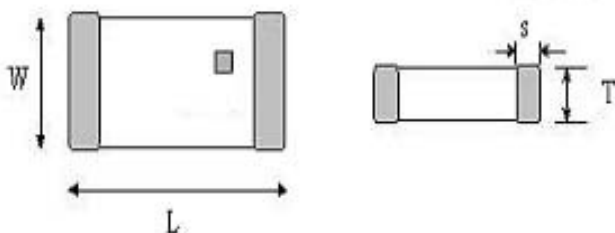
Power Capacity: 3W max

Outline and Dimensions (Unit: mm)

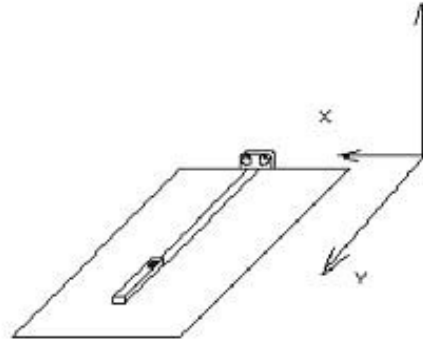
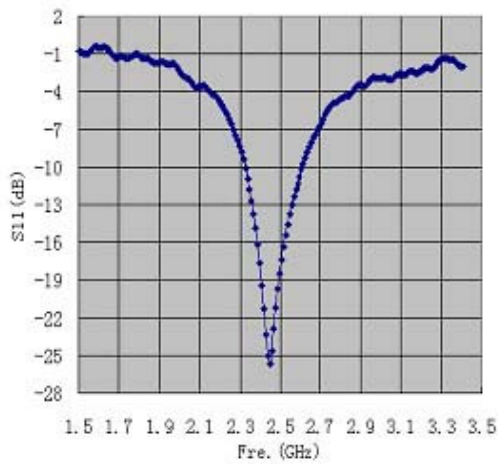
| | |
|-----|---------------|
| (1) | NC |
| (2) | Feeding Point |



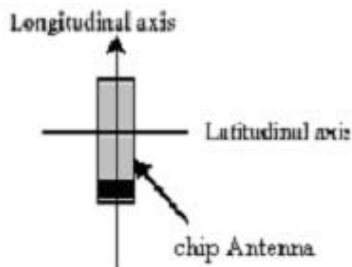
| Mark | W | L | T | S |
|-----------|---------------|---------------|---------------|---------------|
| Dimension | 2.0 ± 0.2 | 9.0 ± 0.2 | 1.0 ± 0.1 | 0.3 ± 0.2 |



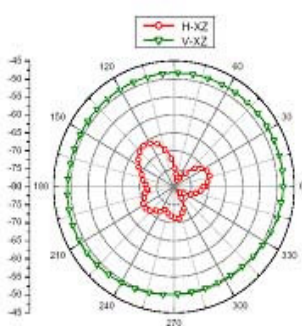
Return Loss



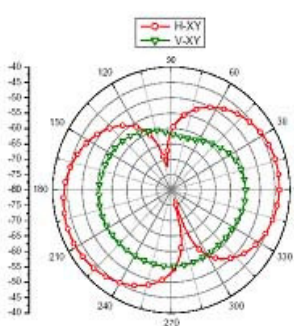
Directivity Chart



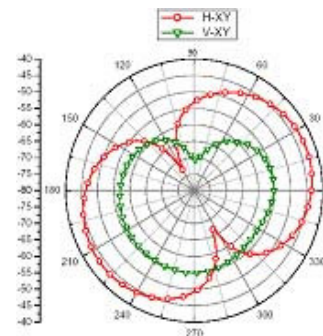
Coordinates system for Measurement



XZ plane radiation Pattern

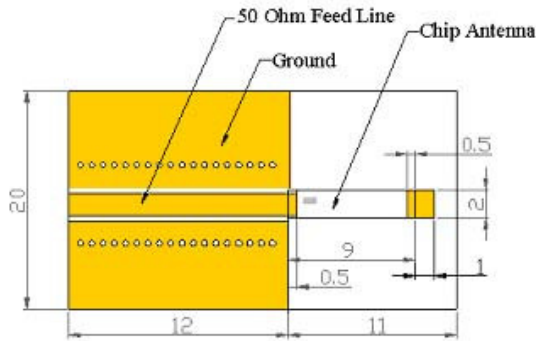


XY plane radiation Pattern

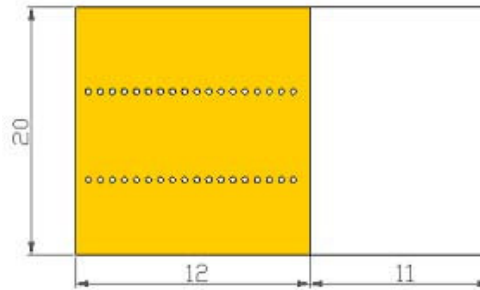


YZ plane radiation Pattern

Reference board and land pattern (Unit: mm)



Evaluation board



GND pattern (Backside of the substrate)

Remark: the dimensions of the soldering pad will affect the resonant frequency of the antenna.